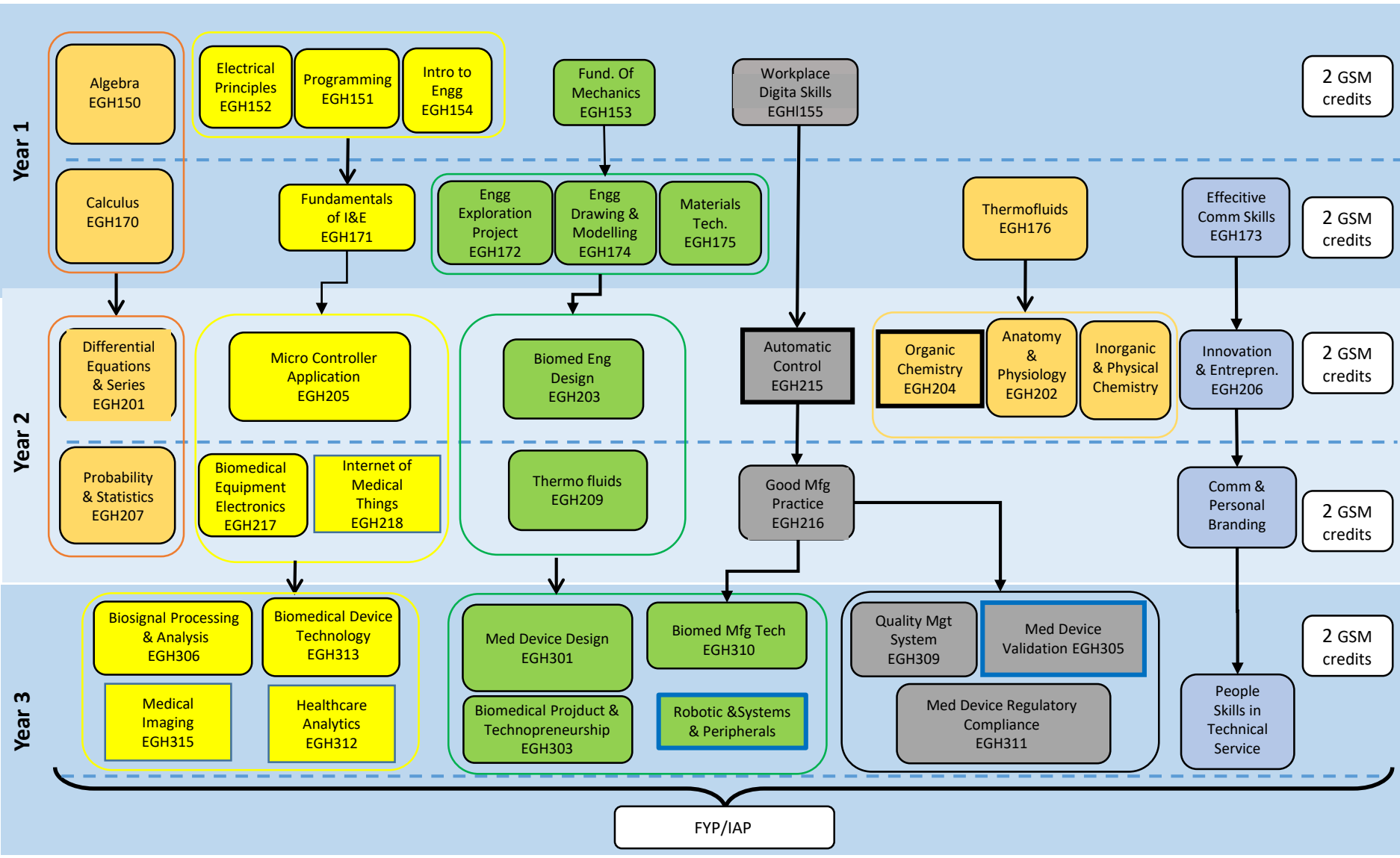


# Diploma in Biomedical Engineering --Integrated Curriculum Map



- Maths & Science
- Engineering & Design
- Yr2 Prescribed Elective (choose 1)
- GSM
- Electrical/Electronics Instrument/Control
- Enterprise & Soft skills
- Yr3 Prescribed Elective (choose 2)
- Quality & Mfg Tech.